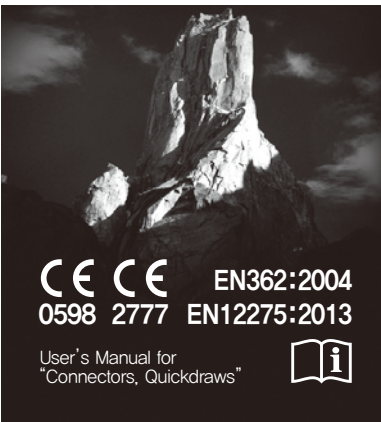


TRANGO

CONNECTOR QUICKDRAW



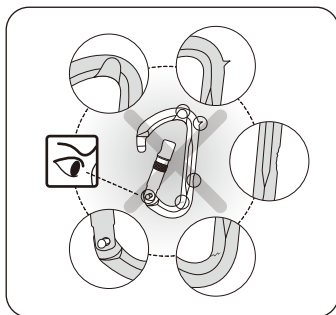
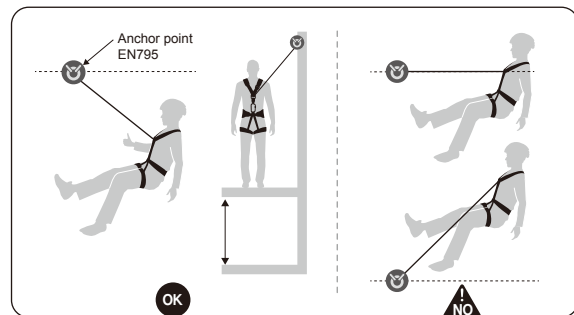
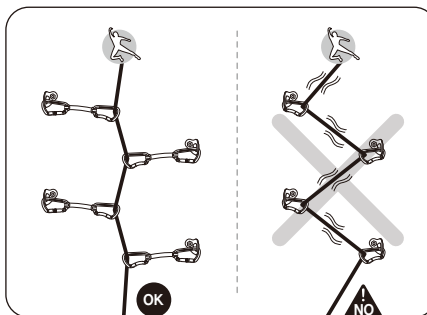
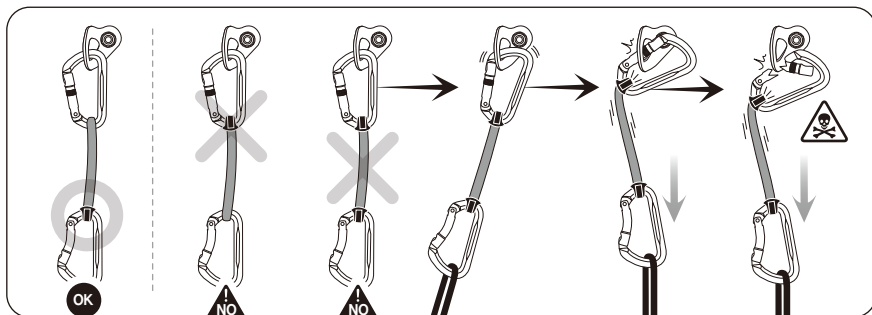
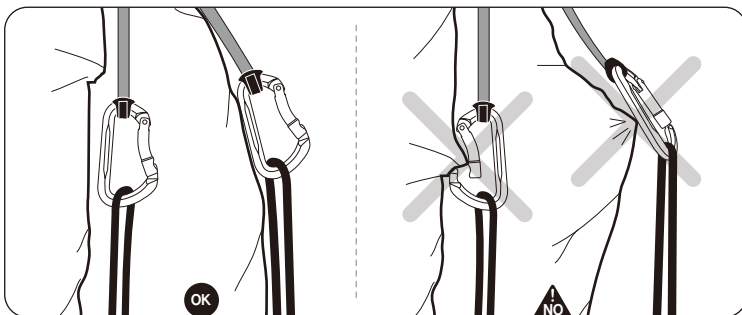
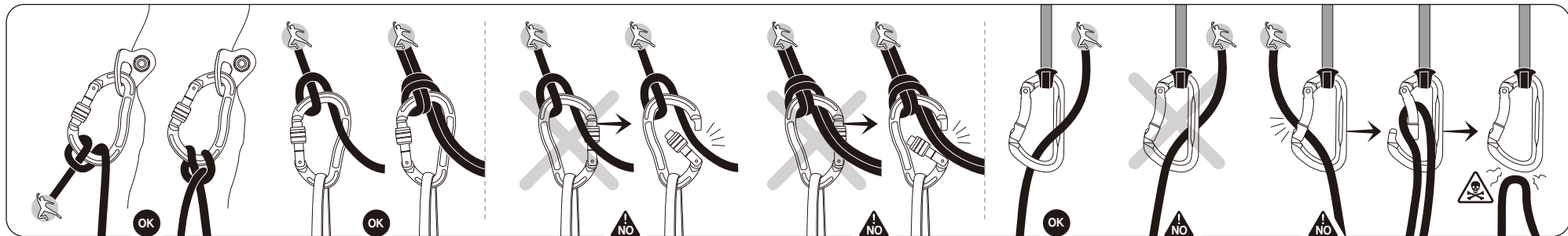
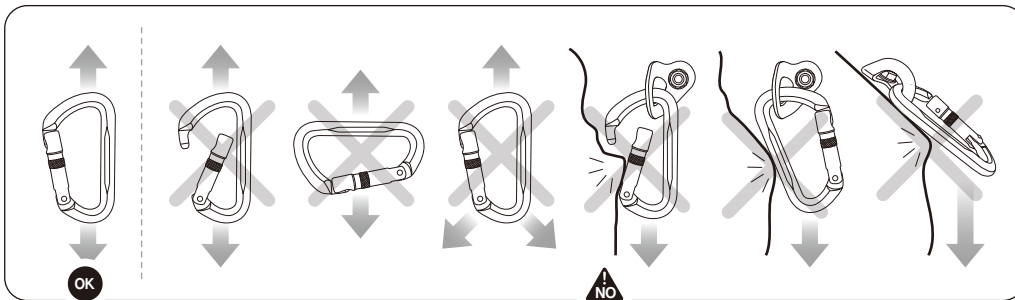
CE EN362:2004
0598 2777 EN12275:2013

User's Manual for
"Connectors, Quickdraws"

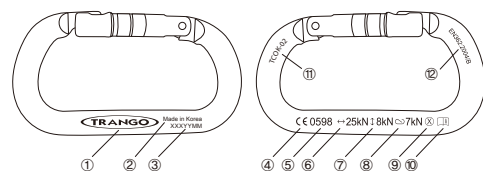


www.trango.co.kr

587-11, Anaji-ro, Gyeongang-gu, Incheon, 21076, Korea
TEL : +82 32 55 55 945 FAX : +82 32 55 55 3946
11-587 호남로 587-11



Markings



- 1 TRANGO : Manufacturer
- 2 Made in Korea : Country of origin
- 3 Lot No. : XXX - Identification number, YYYY - Year & Month of manufacture
- 4 CE : CE marking for Regulation (EU) 2016/425
- 5 0598 : Notified body in charge of the production control (Module D)
- 6 ↔ : Major axis strength - gate closed
- 7 ↓ : Minor axis strength
- 8 ∞ : Major axis strength - gate open
- 9 H, X, B, Q : Connector Class (EN12275)
- 10 ⓘ : Information Pictogram (read the IFU)
- 11 TCOK-02 : Model (EN362)
- 12 EN362:2004/B : Number of European Standard/Class

Ref. No.	Material	EN Standard	Class	↔ (kN)	↕ (kN)	↔ (kN)	∅ (mm)
TCHK-T02	Aluminum Alloy	EN12275	H	27	8	7	26
TCHK-T01	Aluminum Alloy	EN12275	H	24	8	8	22
TCHK-30	Aluminum Alloy	EN12275	H	30	9	8	22
TCHK-02	Aluminum Alloy	EN12275	H	27	8	7	26
TCHK-01	Aluminum Alloy	EN12275	H	27	8	8	24
TCOK-T01	Aluminum Alloy	EN12275	X	24	8	7	19
TCOK-04	Aluminum Alloy	EN12275	X	24	8	7	19
TCOK-03	Aluminum Alloy	EN12275	X	24	8	7	19
TCOK-02	Aluminum Alloy	EN12275	X	24	8	7	19
TCOK-01	Aluminum Alloy	EN362	B	25	8	7	18
TCOK-19	Aluminum Alloy	EN12275	B	23	8	8	20
TCOK-18	Aluminum Alloy	EN12275	B	23	8	8	18
TCOK-17	Aluminum Alloy	EN12275	B	23	8	8	18
TCOK-16	Aluminum Alloy	EN12275	B	24	8	8	20
TCOK-15	Aluminum Alloy	EN12275	B	24	8	8	21
TCOK-14	Aluminum Alloy	EN12275	B	24	8	8	17
TCOK-13	Aluminum Alloy	EN12275	B	24	8	8	16
TCOK-10	Aluminum Alloy	EN12275	B	24	8	8	19
TCOK-09	Aluminum Alloy	EN12275	B	24	8	8	22
TCOK-08	Aluminum Alloy	EN12275	B	28	8	8	20
TCOK-07	Aluminum Alloy	EN12275	B	28	8	8	23
TCOK-03	Aluminum Alloy	EN12275	B	26	8	8	19
TCOK-02	Aluminum Alloy	EN12275	B	26	8	8	19
TCOK-01	Aluminum Alloy	EN12275	B	26	8	8	15
TCD-14	Aluminum Alloy	EN12275	B	24	8	8	23
TCD-13	Aluminum Alloy	EN12275	B	24	8	8	24
TCD-12	Aluminum Alloy	EN12275	B	24	8	8	20
TCD-11	Aluminum Alloy	EN12275	B	24	8	8	20
TCD-06	Aluminum Alloy	EN12275	B	24	8	8	21
TCOK-S02	Alloy Steel	EN362	B	30	15	10	18
TCOK-S01	Alloy Steel	EN362	B	30	15	10	18
TCQ-ST08	Stainless Steel	EN12275	Q	40	10		
		EN362	Q				

Classification of Connectors

<EN12275>

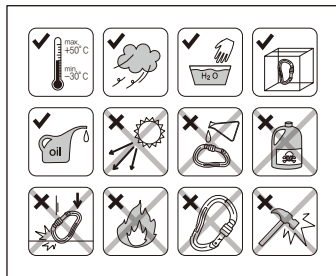
- **Class B** (basic connector) - self-closing connector for use anywhere in a belay system
- **Class H** (HMS connector) - self-closing connector - generally pear shaped - intended to be used primarily for dynamic belaying, for example using an "Italian hitch" (HMS)
- **Class K** (Klettersteig connector) - self-closing connector intended to be used primarily for linking a mountaineer to a Klettersteig anchor (via ferrata) system
- **Class T** (termination connector) - self-closing connector designed to ensure that the loading is in a predetermined direction
- **Class A** (specific anchor connector) - self-closing connector designed only to be linked directly to a specific class of anchor
- **Class Q** (screwed-closure connector) - connector which is closed by a screw-motion gate, which is a load bearing part of the connector when fully screwed up
- **Class X** (oval connector) - self-closing connector with symmetric shape designed for e.g. aid climbing and pulleys

<EN362>

- **Class B** (basic connector) - self-closing connector intended to be used as a component
- **Class M** (multi-use connector) - basic or screw link connector intended to be used as a component
- **Class T** (termination connector) - self-closing connector designed to allow the fixing as an element of a sub-system in such a way that the loading is in a predetermined direction
- **Class A** (anchor connector) - connector which closes automatically, designed to be linked directly to a specific type of anchor as a component
- **Class Q** (screwlink connector) - connector which is closed by a screw-motion gate, which is a load bearing part of the connector when fully screwed up, intended to be used only for long-term or permanent connections

Trademark	Manufacturer	TRANGO Co., Ltd. 587-11, Anaji-ro, Gyeongang-gu, Incheon, 21076, Korea Tel : +82-32-555-3945 / Fax : +82-32-555-3946 / www.trango.co.kr
	Product	
	Type	
	Lot No. (Year / Month of manufacture)	
	Purchase date	
	Date of first use	
	Expiry date	
	User	

Date	Reason for check	Name / Signature	Comments	Result	Date next check
	<input type="checkbox"/> Periodic check <input type="checkbox"/> Repair				
	<input type="checkbox"/> Periodic check <input type="checkbox"/> Repair				
	<input type="checkbox"/> Periodic check <input type="checkbox"/> Repair				
	<input type="checkbox"/> Periodic check <input type="checkbox"/> Repair				
	<input type="checkbox"/> Periodic check <input type="checkbox"/> Repair				
	<input type="checkbox"/> Periodic check <input type="checkbox"/> Repair				



EU Type-examination by:
APAVE SUD EUROPE SAS
8 rue Jean-Jacques Vernazza - ZAC. Saumaty Seon - BP 193
13322 Marseille Cedex 16, France - NB0082

SATRA Technology Europe Ltd.
Bracetown Business Park, Clonee, D15YN2P, Ireland - NB2777

CE 0598
SGS FIMKO OY - Takomotie 8, FI-00380 Helsinki, Finland
SGS is NB in charge to product's control

CE 2777
SATRA Technology Europe Ltd.
Bracetown Business Park, Clonee, D15YN2P, Ireland
SATRA is NB in charge to product's control

